

Explaining poverty to the public

Joanna Mack, The Open University

www.poverty.ac.uk



Third Peter Townsend Memorial Conference
Poverty and Social exclusion in the UK



Re-framing the debate: PSE press coverage

The Daily Mirror, front page, 19 June 2014

Mirror-p1-20140619.pdf - Google Chrome

file:///C:/Users/fo/Downloads/Mirror-p1-20140619.pdf

INSIDE
Your complete
2014-15 football
fixtures guide

Every club, every game

PLUS
Brilliant
World Cup
pullout

SHOCK REPORT SHAMES BRITAIN

POVERTY TRAPPED

DESPERATE
Millions of kids
are suffering

BY JASON BEATTIE
THE number of Britons living in poverty has soared to one in three, a shock report reveals.
Almost 18 million cannot afford adequate housing and 2.5 million kids live in damp homes.
It also shows that poverty has more than doubled in 30 years, as David Cameron allows the gap between rich and poor to become a chasm.
Furious Labour MP Frank Field branded the rise "horrendous".
FULL STORY: PAGES 6&7

» One in three on breadline as the rich get richer
» 2.5 million children forced to live in damp homes

FAILING
Under fire
Mr Cameron

Metro-p6-20140619.pdf Metro-p6-20140619.pdf Independent_i-p5-20...pdf Independent_i-p5-20...pdf Mirror-p6-20140619.pdf Mirror-p6-20140619.pdf Guardian-p4-20140619.pdf Show all downloads...



Iraq needs our support

DAVID Cameron's warning that Islamist terrorists in Iraq could attack Britain is a reminder that we are not insulated from the carnage thousands of miles away.

We have a vested interest in the elected Government in Baghdad, whatever its failings, beating back the Islamic State of Iraq and Syria.

Britain cannot avoid some responsibility for what is unfolding after the 2003 invasion created a power vacuum filled by sectarian violence.

But our military intervention failed once and would very likely fail again.

The best strategy is to support Iraq financially and diplomatically and to share intelligence.

Returning jihadists are unlikely to slip into their old lives and may pose a danger. Tackling them without alienating the wider Muslim community requires tact and sensitivity.

We hope the threat isn't used as a smokescreen for another crackdown on the civil liberties of the law-abiding majority.

Shameful truth

THE majority of children scarred by poverty live in homes in which at least one parent has a job.

Today's Bristol University report explodes myths peddled by a Government presiding over an explosion in misery.

The number of Britons living below the headline has soared to one-in-three of the population.

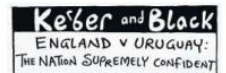
And smearing the poor as skivers, as Tory Ministers regularly do, adds insult to injury as the coalition blames the victims of free market failures and a callous political creed for their own plight.

Concerning millions of Britons to heart-breaking subsistence while gifting a huge tax handout to millionaires is shameful even by the appalling standards of this Government.

Doctor's orders

TAKING a drink for medicinal purposes is an old excuse transformed by the blessing of a doctor who advises patients to enjoy red wine.

Forget that old tale about an apple - because now it's a glass of red wine a day that keeps the doctor away.



DEMAND Mr Field called for action

BY JASON BEATTIE Political Editor

SMUG ministers keep saying they are helping people out of hardship - but their claims have been shot to pieces today by shocking evidence.

In a damning verdict on the Coalition, a report has revealed that 33% of people in Britain are living below the headline.

It means poverty has more than doubled since 1983 when the figure stood at 14%.

Shadow Work and Pensions Secretary Rachel Reeves said: "David Cameron's government has completely failed to tackle poverty and deprivation."

"Child poverty is set to rise, not fall under his government. And there are more people in poverty in work than out of work."

And Labour MP Frank Field added: "Tackling the causes of poverty is clearly the right strategy - this report shows that the Government's strategy isn't working."

"Here there is the most major

“Ministers aimed to tackle poverty - they have failed”

PROF DAVID GORDON ON THE SHAMEFUL FINDINGS

challenge to all our political parties: what is your manifesto going to say to reverse the horrendous rise in the numbers of people in poverty detailed in this report?"

The major study, led by Bristol University, revealed a string of shameful findings.

■ Almost 18 million cannot afford adequate housing conditions

■ 1.5 million children live in households that cannot afford to heat the home

■ 2.5 million kids live in properties that are damp

■ More than half a million children live in families who cannot afford to feed them properly

■ 12 million people are too poor to

POVERTY TRAPPED: SCANDAL OF UK'S GREAT DIVIDE

1983

14% of Brits living below headline

2014

33% below headline

- » 18 million live in inadequate houses
- » 12 million too poor to have a social life
- » 1 in 6 adults in paid work is poor
- » 2.5 million kids live in damp homes



Worth £8.5bn... up £700m The Duke of Westminster

Worth £9.75bn... up £2.35bn Ernesto & Kirsty Bertarelli

Worth £3.75bn... up £1.45bn Mike Ashley

Forget fair play - we are example of how inequality ruins a nation's prospects

BY DUNCAN EXLEY Director, The Equality Trust

THE UK today is one of the developed world's most unequal countries.

Far from being a beacon of fair play, we are now an example of how inequality can ruin a nation's prospects.

A High Pay Centre report says this week that the poorest fifth in the UK now have incomes closer to the poorest in former Eastern bloc countries than to those in Western Europe. And today we learn from the Poverty and Social Exclusion study one in three Britons cannot afford the basics of a decent life.

In contrast, the wealth of the richest 100 people rose last year to £297 billion - more than the wealth held by 30% of the population. This rise in wealth could pay the energy bill for all 26.4 million UK households for over a year.

People from the Pope to the International Monetary Fund have warned us excessive inequality has negative consequences. So why is the UK so unequal? Many justifications are made for the extraordinary increase in wealth of the richest. But can 100 people really have as much value as almost 19 million people?

Others say it doesn't matter because the economy is on the up. But our recovery is only being felt by those at the top. Polling this week found only one in five think the recovery is real.

blamed on worklessness. Government figures show us that a majority of children in poverty are in working families. This is largely a low-pay crisis. As bosses have bargained for higher and higher pay, ordinary workers are left with stagnating or even falling real wages.

While the poor can't take the blame for their poverty, the rich can't take all the credit for their fortunes. Those who manage our biggest companies are typically paid over £1 million a year - far more than is typical in Europe. Others in the UK's top 1% own their increasing riches to the luck of the stock markets.

Studies have shown how more unequal countries have worse life expectancy, health, educational outcomes, social mobility and crime.

Inequality is also ruining our economy, because the majority of people have little spare cash to spend in the shops, while a minority are using their spare millions to speculate on the housing market, making homes unaffordable for others.

The UK is a country where bags of luxury handbags for dogs are booming while working people are in poverty. These are the conditions in which extremist political movements traditionally flourish. If this country is not to become a political, social and economic basket case, the Government must take action.

“Wealth rise of the UK's richest could pay everyone else's annual energy bills”

“People from the Pope to the International Monetary Fund have warned us excessive inequality has negative consequences. So why is the UK so unequal? Many justifications are made for the extraordinary increase in wealth of the richest. But can 100 people really have as much value as almost 19 million people?”

“Others say it doesn't matter because the economy is on the up. But our recovery is only being felt by those at the top. Polling this week found only one in five think the recovery is real.”

“blamed on worklessness. Government figures show us that a majority of children in poverty are in working families. This is largely a low-pay crisis. As bosses have bargained for higher and higher pay, ordinary workers are left with stagnating or even falling real wages.”

“While the poor can't take the blame for their poverty, the rich can't take all the credit for their fortunes. Those who manage our biggest companies are typically paid over £1 million a year - far more than is typical in Europe. Others in the UK's top 1% own their increasing riches to the luck of the stock markets.”

“Studies have shown how more unequal countries have worse life expectancy, health, educational outcomes, social mobility and crime.”

“Inequality is also ruining our economy, because the majority of people have little spare cash to spend in the shops, while a minority are using their spare millions to speculate on the housing market, making homes unaffordable for others.”

“The UK is a country where bags of luxury handbags for dogs are booming while working people are in poverty. These are the conditions in which extremist political movements traditionally flourish. If this country is not to become a political, social and economic basket case, the Government must take action.”

SQUALID HOMES Families are forced to live in damp houses

Picture posed by models

diaped the myth, often conveyed by government ministers, that poverty is personal and child poverty is

white and live in England." The Poverty and Social Exclusion in the United Kingdom project, which

Poverty Research at Bristol University, said: "The Coalition government tried to avoid a direct comparison

hope to the poor. But a Department for Work and Pensions spokesman said: "There is strong evidence that

100,000 fewer children in workless poor families. As part of our commitment to the Government's

Despite the size of the economy doubling in the past 30 years, the number of families who cannot



Apology... Mrs May

Passport row May: I'm sorry

By STEVE HAWKES

HOME Secretary Theresa May told MPs yesterday amid the battle to clear a backlog of half a million passport applications: "I am sorry and the Government is sorry." She said staff were struggling with a workload that has hit a 12-year high. Labour said that she had previously refused 15 times to say sorry to the thousands left in the lurch over travel plans. Shadow home secretary Yvette Cooper, insisted Mrs May "hasn't had her eye on the ball". She predicted summer-long chaos - and said Brits' holidays were "being wrecked by her incompetence".

DOUBLE ACT

Nigel Farage has struck a pact for his 24 UKIP MPs to join forces with the 17 from Italian comic Beppe Grillo's party.

DESPERATE ED GETS TOUGH

MILIBAND DOLE FOR U21s

DESPERATE Ed Miliband will today pledge to axe benefits for jobless young people in a bid to save his political skin.

By KEVIN SCHOFIELD
Chief Political Correspondent

David was leader. It put Mr Miliband behind David Cameron by 33 per cent to 23 per cent when voters are asked who would be the better PM.

However, when David Miliband was put up against Mr Cameron, he won by 35 per cent to 23 per cent.

Another poll yesterday showed 43 per cent of Labour members say Ed should be dumped as party leader.

ZERO dole unless you've worked for 5 years



Poll blows... Miliband

Allowance from jobless 18 to 21-year-olds. It would be replaced with a means-tested "youth allowance" - if they join a training scheme.

He will also say JSA payments could go up from £71 to £100 for those who have paid more taxes. The jobless would also not be eligible for dole unless they have worked for five years, rather than two as they do at present.

Mr Miliband will say: "We must reshape our social security system so it does everything to get people into the world of work, not a life on benefits." Former Labour minister Alan Johnson admitted Mr Miliband was unable to "connect" in the way his brother could. He said: "I can't pretend people are really enthusiastic about Ed."

Tory chairman Grant Shapps last night condemned the ideas, adding: "Ed Miliband has no economic plan."

Kevin.schofield@news.co.uk
The Sun Says - Page Eight

Wash in buckets

EXCLUSIVE by JACK LOSH

PATIENTS had to wash from hospital hazardous waste buckets - filled with hot water from a tea machine.

One woman being treated at London's Charing Cross Hospital said some elderly patients were not washed for days after a boiler broke down. The NHS trust apologised and said the heating problem left three ward patients without hot water.



£2bn NHS BLACK HOLE

HOSPITAL patients will suffer longer waiting times, cancelled ops and poor care as the NHS battles with an £2billion black hole next year, campaigners have warned.

By EMILY ASHTON
Whitehall Correspondent

enough to cover costs. But pressure groups yesterday urged him to get a grip before it is too late.

Patients Association chief Katherine Murphy said a lack of finances means "sub-standard, unsafe and undignified care" is imminent. The

Warned... Hunt



King's Fund think tank said there was a "real risk" of hospitals running out of cash next year.

Chief Chris Ham said: "The impact is already being felt on patient care."

Health watchdog Monitor predicted a shortfall of at least £1.6billion in hospital and mental health service budgets. And Anita Charlesworth, chief economist at the Health

Foundation think tank, warned: "We're not going to find this money behind the sofa, so it really would mean the Treasury stopping in."

The Department of Health last night insisted it was confident the NHS is "on track to make £20billion savings this Parliament".

MEDICAL jargon leaves 43 per cent of patients baffled, a survey has found.

The Sun Says - Page Eight

lems - had launched a civil damages claim. However, Mr Hancock can remain as an independent MP for Portsmouth South at least until the General Election. And Parliament has no right to investigate or punish him. A spokesman for Mr Hancock - now at the Priority rehab hospital in Southampton - had repeatedly insisted there was no case to answer. "Annie" claims the Lib Dems had ignored her when she contacted them.

CLARIFICATIONS & CORRECTIONS

THE Sun aims to have the highest editorial standards in the paper and on digital. You can help us by letting us know if we have made any mistakes. Email us at ombudsman@the-sun.co.uk or write to us care of The Sun Ombudsman, 3 Thomas More Square, London E8 9JN. We aim to correct significant factual errors as soon as we can. The Sun also adheres to the terms of the Editors' Code of Practice, administered by the Press Complaints Commission. Go to the website www.pcc.org.uk for further details.

'33% of families are poor'

MINISTERS were blasted last night for deserting the "working poor" - as a report claimed millions now live on the breadline.

A major study of modern day poverty said 33 per cent of households fall below "society's minimum standard of living".

While employment is at a record high, millions are trapped in low paid jobs with no chance of promotion. The Poverty and Social Exclusion report said 3.5million adults go without essential clothing and one in six "in paid work are poor".

SAT! DO NICELY

Saturday's Lotto prize is a £2million rollover as no one won last night with 10, 11, 18, 23, 26, 37. Bonus number 6.

GOT A STORY? CALL NEWSDESK ON 0207 782 4100

The Guardian, page 4, 19 June 2014

Guardian-p4-20140619.pdf - Google Chrome

file:///C:/Users/fo/Downloads/Guardian-p4-20140619.pdf

but it is a pretty unconvincing argument. "A lot of these issues go beyond legal questions, they bring in moral, ethical and social considerations."

Lincoln became chief inspector with the surveillance watchdog after a 28-year career spent mostly in military intelligence where he rose to the rank of lieutenant colonel.

He served on the Defence Intelligence Staff and was commanding



...stepped tapping, would ensure that Anglo-German relations are not damaged.

Der Spiegel last year revealed that Merkel's phone had been tapped after an investigation based on the NSA files leaked by Edward Snowden. **Nicholas Watt**

...willing to explain and engage with the public: "The approach of 'why are you challenging us, we are the good guys' doesn't wash ... The 'looking for a needle in a haystack' argument has so far been unconvincing. I haven't been convinced."

"National security", the justification for mass surveillance revealed by Snowden, needed better definition.

Leader comment, page 34»



One of the many striking hats worn by racegoers on the second day of the Royal Ascot race meeting in Berkshire Photograph: Leon Neal/AFP/Getty Images

Poverty doubled in 30 years, study shows

Steven Morris

The number of British households falling below minimum living standards has more than doubled in the past 30 years, despite the size of the economy increasing twofold, a study on poverty and deprivation in the UK claims today.

According to the study, 33% of households endure below-par living standards - defined as going without three or more "basic necessities of life", such as being able to adequately feed and clothe themselves and their children, and to heat and insure their homes. In the early 1980s, the comparable figure was 14%.

The research, billed as the most detailed study ever of poverty in the UK, claims that almost 18 million Britons live in inadequate housing conditions and that 12 million are too poor to take part in all the basic social activities - such as entertaining friends or attending all the family occasions they would wish to. It suggests that one in three people cannot afford to heat their homes properly, while 4 million adults and children are not able to eat healthily.

Having someone in the household in work does not prevent British families from facing tough living conditions, according to the research, undertaken by

the Poverty and Social Exclusion project (PSE).

The findings will be seized on by opponents of the coalition, who argue that good news about the economy does not mean living standards are improving for most people. This will be a key Labour message in the run-up to next year's election.

Other figures being published include the claims that 5.5 million adults go without essential clothing; that 2.5 million

33% The percentage of households going without 'basic necessities', such as heating, compared with 14% in the early 1980s

children live in damp homes; that 1.5 million children live in households that cannot afford to heat them; that one in four adults have incomes below what they themselves consider is needed to avoid poverty, and that more than one in five adults have to borrow to pay for day-to-day needs.

Prof David Gordon, from the Townsend Centre for International Poverty Research at the University of Bristol, said: "The coalition government aimed to eradicate poverty by tackling the causes of pov-

erty. Their strategy has clearly failed. The available high-quality scientific evidence shows that poverty and deprivation have increased. The poor are suffering from deeper poverty and the gap between the rich and poor is widening."

Led by the University of Bristol and funded by the Economic and Social Research Council, the PSE project's research will be published in full this week. Gordon said he had been shocked by some of the findings. "In the early 1980s we assumed life was going to get better. For many it has, for many it hasn't."

According to the research, which also involved universities in Glasgow, York, Oxford and Northern Ireland, 21% of households are behind with bills, against 14% in the late 1990s. More than one in four adults have skimped on food so that others in the household might eat.

The PSE project argues that its findings dispel the idea that poverty in general and child poverty in particular is a consequence of a lack of paid work. It found that the majority of children who suffer from multiple deprivations live in small families with one or two siblings, with both parents, have at least one parent who is employed and are white.

The findings will be discussed at the Peter Townsend memorial conference beginning in London today.

Labour to cut benefits for young jobless

« continued from page 1

to redistribute income without making painful choices. Even with a different economic agenda, there is little prospect of any government elected in 2015 spending its way to greater equality."

Pearce urges Labour to reject a business as usual path in which the government "would tax a little more and cut a little

untouched and the current framework of services and social security in place".

Miliband will also back proposals for local councils to be given more control of the ballooning housing benefit budget. The report suggests the housing benefit bill will reach £25.4bn, with real terms rises expected for the next five years.

Miliband argues the IPPR report shows that even when there is no money to spend radical reform can be started in the fields of health, child care, welfare, social care and housing. But he is going to be cautious about embracing some of its specific plans drawn up over the past 18 months, including a £2bn child care package, funded through scrapping plans for a marriage tax allowance, freezing child benefit and reducing pension tax reliefs.

to be a switch of government resources from tax transfers and credits to delivering services, something that might require abandoning the expensive target to eliminate child poverty.

In probably the biggest proposal, the IPPR will argue that the left has to restore the contributory principle in the welfare system. Pearce argues social security for the unemployed has become a liability for social democrats.

There is frustration among some Labour policy leaders at Miliband's reluctance to embrace more of the report, designed to show how the left set out a redistributionist agenda in the post-crash world. It has had the support of Jon Cruddas, head of the Labour policy review.

OK, so we're better at removing bad ads than making good ones.

Here at the Advertising Standards Authority, we judge ads on whether they're harmful, misleading, or offensive. Not on whether they're funny, clever or they look good. Which is just as well, really.

Telephone 020 7492 2222 www.asa.org.uk



iPad edition Today's paper, beautifully delivered theguardian.com/mobile

Metro-p6-20140619.pdf

Metro-p6-20140619.pdf

Independent_i-p5-20....pdf

Independent_i-p5-20....pdf

Mirror-p6-20140619.pdf

Mirror-p6-20140619.pdf

Guardian-p4-20140619.pdf

Show all downloads...

SOCIETY

Number in poverty has soared since Thatcher

By Chris Green
SENIOR REPORTER

The proportion of impoverished households has more than doubled to 33 per cent in the 30 years since Margaret Thatcher was prime minister, the largest study of deprivation ever conducted in the UK has concluded.

The research found that rises in the cost of living meant a full-time job was no longer enough to prevent some people from falling into poverty. One in every six adults in paid work is now defined as poor.

Last night the Government's poverty tsar, Frank Field, said the study's stark findings proved the Coalition's approach to the problem "isn't working" and called for the leaders of all political parties to make manifest pledges to reverse the trend.

The Poverty and Social Exclusion project, based on interviews with more than 14,500 people in Britain and Northern Ireland carried out by eight universities and two research agencies, found that 18 million people cannot afford adequate housing while about 5.5 million adults go without essential clothing and 2.5 million children are living in damp homes.

The survey showed that the percentage of UK households which lacked "three or more of the basic necessities of life" has increased from 14 per cent (about three million) in 1983, the year that Margaret Thatcher was re-elected, to 33 per cent (8.7 million) in 2012, despite the size of the

economy doubling in that period. Researchers used the "three or more" formula as it is directly comparable with methods used in 1983.

Academics said the findings dispelled the myth that poverty was caused by a lack of work or by people shirking. Almost half the "employed poor" were clocking up 40 hours a week or more.

According to separate research by the Joseph Rowntree Foundation, about half of the UK's 13 million people in poverty are in a household where someone works. Between 2008 and 2014 the cost of essentials such as childcare, rent, food and energy have driven up the amount needed by almost a third, it said.

Professor David Gordon of the Townsend Centre for International Poverty Research at the University of Bristol, which led the project funded by the Economic and Social Research Council, said the Government's strategy to tackle the root causes of poverty had "clearly failed".

Mr Field, the Labour MP who was tasked by David Cameron in 2010 to examine poverty, said the study "sadly emphasises that working doesn't now eliminate a family's poverty".

He added: "Tackling the causes of poverty is clearly the right strategy. This report shows that it isn't working. Here, then, is a most major challenge to all the political parties - what is your manifesto going to say to reverse the horrendous rise in the numbers of poor?"



The survey found that 18 million people cannot afford adequate housing GETTY

A Department for Work and Pensions spokesman said: "There is strong evidence that incomes have improved over the last 30 years, despite the misleading picture painted by this report. The independent statistics are clear, there are 1.4 million fewer people in poverty since 1998."

Jonathan Bradshaw, professor of social policy at the University of York, said that "in many households parents sacrifice their own welfare" to try to keep their children insulated from the effects of poverty.

Poverty by numbers

18m People cannot afford adequate housing conditions

12m Are too poor to engage in common social activities

5.5m Adults go without essential clothing

4m Children and adults are not properly fed by today's standards

2.5m Children live in damp homes

1.5m Children live in households that cannot afford to heat their home

1 in 3 People cannot afford to heat their homes adequately in the winter

1 in 4 Adults have incomes below what they consider is needed to avoid poverty

17% Of adults in paid work are defined as poor

21% Were in arrears on their household bills in 2012

DIPLOMACY

Libya demands US



EDUCATION

Gove approves 38 new



Every little helps

Ed Miliband to announce radical changes to encourage young jobless back into work or training

ANDREW GRICE
POLITICAL EDITOR

Jobless young adults would lose their automatic right to some state benefits under a Labour government in a bid to encourage them to find work, Ed Miliband will announce today.

The 18-21 age group would no longer qualify for Jobseeker's Allowance (JSA) and income support if they have skills below Level 3 on the National Qualifications Framework – which includes A-levels, AS-levels, and their vocational equivalents.

If they undertook training to try to reach that level, they would qualify for a £57-a-week allowance, the JSA rate for under-25s.

Even then, it would be means-tested and paid only if their parents' joint income was less than £2,000 a year.

In addition, unemployed young adults would normally be expected to live with their parents rather than claim housing benefit.

The "tough love" plan is aimed at tackling the problem of almost one million "Neets" – young people not in education, employment or training. It would affect about 100,000 people, seven out of 10 of the 18-21 group claiming JSA. Current benefit rules prevent them training while looking for work. Labour claims the move would save at least £65m a year in lower benefit payments and much more in the long run because a "Neet" costs the Government more than £2,000 a year for the rest of their working lives.

Although denying benefits is bound to cause controversy, Mr Miliband will describe the move as "progressive not punitive". It would not apply to peo-

WHAT'S GOING WRONG MILIBAND'S HEADACHES

Lack of a big offer Measures, such as a 20-month energy price freeze, are popular in themselves but have not been knitted into a positive vision.

The economy, stupid Labour's lead in the opinion polls is being eroded as the economy improves. Some Labour MPs fear Miliband's "cost of living" agenda is past its sell-by date.

His personal ratings Voters do not yet see Miliband as a Prime Minister-in-waiting. The Tories will present next year's election as "a choice between two PMs".

Unforced errors Critics are worried his inner circle lacks experience and political nous – and that there is too much internal rivalry.

ple with young children or disabilities that prevent them preparing for work. He will say the present system is unjust for young people not at university because they get no state support if they do more than 16 hours a week of training or further education. The proposal forms part of a blueprint published today by the IPPF think tank on how to create a fairer society in an age of austerity. The *Condition of Britain* report will shape the policies on which Labour will fight next year's general election.

Mr Miliband will also endorse the IPPF's plan to restore the contributory principle to the heart of the welfare system. Under Labour, the higher rate £71-a-week JSA, currently paid to people who have been in work for two years, would kick in only after five years in work, but the level would be raised by between £20-£30 a week.

The Labour leader will also back the IPPF's proposal to switch spending from housing benefit to house building. Local authorities would keep some of the savings from negotiating lower rents with landlords to spend on building new homes, bringing down the £2.8bn annual housing benefit bill in the long term.

Labour hopes the new policies will tackle its image as "the welfare party" and boost its economic credentials. Launching the report, Mr Miliband will commit Labour to "big changes" without "big spending". He will say: "We face an economy where inequality is rising, year after year, and where so many people feel locked out of the chances that previous generations enjoyed. Turning that round is the mission of the next Labour government."

Editorial, p2



Clegg finds new gears

Nick Clegg greeted Sheffield schoolchildren at a tour de France reception in London yesterday. The race starts in Yorkshire next month, to be a

ARMENIAN

DOWNLOAD OUR FREE INDEPENDENT APP
Go to: independent.co.uk/apps

RAF F-35 fighters were scrambled to intercept "multiple Russian aircraft" as part of the Nato mission to police the Baltics, the Ministry of Defence has said. Four groups of aircraft were detected in international airspace on Tuesday. The MoD said the aircraft seemed to be carrying out "training".

Ukip forms alliance with French far-right MEP

Ukip has formed a new group in the European Parliament, including an MEP elected as a member of France's far-right Front National. Joëlle Bergeron, now an independent, was elected as a member of Marine le Pen's party in May but quit days later, claiming "their philosophy is no longer mine".

Ukip forms alliance with French far-right MEP

Ukip forms alliance with French far-right MEP

Ukip forms alliance with French far-right MEP

Ukip forms alliance with French far-right MEP

Ukip forms alliance with French far-right MEP

Ukip forms alliance with French far-right MEP

Ukip forms alliance with French far-right MEP

Poverty doubles in 30 years as work fails to cover costs

CHRIS GREEN
SENIOR REPORTER

The proportion of impoverished households has more than doubled in the 30 years since Margaret Thatcher was Prime Minister, the largest study of deprivation ever conducted in the UK has concluded.

The research found that rises in the cost of living mean a full-time job is no longer enough to prevent some people from falling into poverty. One in every six adults in paid work is now defined as poor.

Last night, the Government's poverty czar, Frank Field, said the study's stark findings proved the Coalition's approach to the problem "isn't working" and called for the leaders of all political parties to make manifestos pledge to reverse the rise.

The Poverty and Social Exclusion project, based on interviews with more than 14,500 people in Britain and Northern Ireland carried out by eight universities and two research agencies, reported:

- More than 500,000 children live in families who cannot afford to feed them properly;
- 18 million people cannot afford adequate housing;
- 12 million people are too

poor to engage in common social activities;

● About 5.5 million adults go without essential clothing.

The survey showed that the percentage of UK households which lacked "three or more of the basic necessities of life" has increased from 14 per cent in 1983, the year that Margaret Thatcher was elected, to 33 per cent (around 8.7 million) in 2012, despite the size of the economy doubling in that period. Researchers used the "three or more" formula as it is directly comparable with methods used to study poverty and deprivation in 1983.

Academics said the findings dispelled the myth that poverty is caused by a lack of work or by people shirking work. Almost half the "employed poor" were clocking up 40

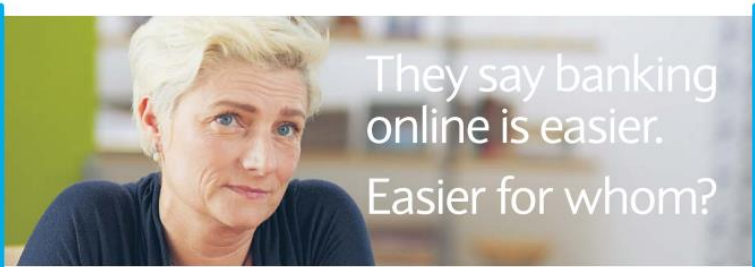
hours a week or more. According to separate research by the Joseph Rowntree Foundation, around half the UK's 13 million people in poverty are in a household where someone works. Between 2008 and 2010, the cost of essentials such as childcare, rent, food and energy have driven up the amount needed by almost a third.

Professor David Gordon, of the Townsend Centre for International Poverty Research at the University of Bristol, which led the project funded by the Economic and Social Research Council, said the Government's strategy of tackling the root causes of poverty had "clearly failed".

Mr Field, the Labour MP who was asked by David Cameron to examine poverty in 2010, said the study "sadly emphasises that working doesn't now eliminate a family's poverty".

A Department for Work and Pensions spokesman said: "There is strong evidence that incomes have improved over the past 30 years, despite the misleading picture painted by this report. The statistics are clear, there are 1.4 million fewer people in poverty since 1980, and under this Government we have protected the poorest from falling behind."

18 million Cannot afford adequate housing



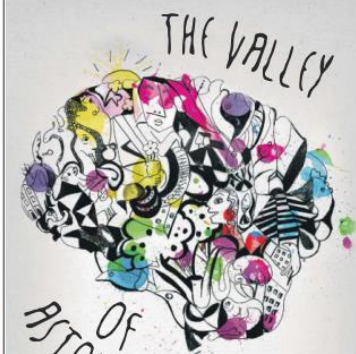
People who use online banking find that it makes life easier because they can keep on top of their money at any time. However, if you don't feel at ease in an online world, we have Barclays Digital Eagles in every branch. Their job is to help you feel more confident and more secure with new technology, making your life that little bit more convenient.

To find out more, visit a Digital Eagle in branch, or share your ideas about what else we can do to give you more confidence online at barclays.co.uk/yourbank



Barclays Bank PLC is authorised by the Prudential Regulation Authority and regulated by the Financial Conduct Authority and the Prudential Regulation Authority (Financial Services Register No. 122702). Barclays Bank PLC, Registered in England. Registered No. 1026167. Registered Office: 1, Churchill Place, London E14 5HP.

PREVIEWS SOLD OUT — BOOK NOW



THE BEST THEATRE IN LONDON? (THE GUARDIAN)

WRITTEN AND DIRECTED BY PETER BROOK AND MARIE HELENE ESTIENNE

NOW UNTIL 12 JULY Young Vic
020 7922 2922 YOUNGVIC.ORG
It's a big world in here



Wreckage: Two men in their 20s suffered serious injuries when their car almost crashed into a house and was left impaled on a tree. They were taken to Brighton hospital after the smash early yesterday in Bewbush, West Sussex PICTURE: EDDIE MITCHELL

'Chink in armour' can end superbug threat

THE threat posed by antibiotic resistant superbugs could be tackled in the nick of time now the deadly bacteria's 'Achilles heel' has been discovered by scientists.

Just months after the World Health Organisation claimed an alarming rise of drug-resistant bacteria posed a huge threat to the human race, researchers claim they have found a way to fight back.

Scientists have discovered

by **AIDAN RADNEDGE**

the bug responsible for E.coli and MRSA builds up an impenetrable wall to keep out antibiotics.

They believe that drugs can be developed to stop bacteria building a protective barrier around cells, rather than attacking the bugs directly.

This would prevent bacteria from building up a resistance to antibiotics. Prof Changjiang

Dong, whose research team at the University of East Anglia made the discovery, said: 'This is really important because drug-resistant bacteria are a global health problem.'

'The number of superbugs is increasing at an unexpected rate, but this research provides the platform needed for urgently-needed new-generation drugs,' he added.

Prof Mark Fielder, from the Society for Applied Micro-

biology, called the findings 'a welcome piece of news'.

'If we fully understand the workings and construction of structures that help bacteria function we can hopefully exploit weaknesses and kill the organism,' he said.

England's chief medical officer, Prof Dame Sally Davies, warned last month that routine operations could be deadly in 20 years if we lose the ability to fight infections.

Childhood crimes 'are in the past'

JOB applicants should not have to disclose minor childhood convictions, the supreme court confirmed yesterday. A worker's right to a private life was breached when he was forced to reveal a caution for stealing a bicycle aged 11, said five judges, as they upheld an appeal court decision. The equality and human rights commission said people should not be haunted by 'minor childhood offences'.

MP sorry for 'degrading' woman

AN MP has apologised for an 'inappropriate relationship' he had with a constituent. Mike Hancock (pictured) said he did not treat 'Annie', a vulnerable single mother, 'with sufficient respect'. His apology was part of an out-of-court settlement after she sued the Portsmouth MP.



Poverty 'getting worse' for poorest

THE number of households which fall below the minimum standard of living has increased sharply in the past 30 years, experts have said. One in three people cannot afford to heat their homes properly in winter, with 4million Britons not sufficiently fed. This proves full-time work isn't enough to escape poverty, the University of Bristol said. 'The coalition's strategy has clearly failed,' author Prof David Gordon added.

Pitt and Capaldi back fire appeal

ACTORS Brad Pitt (pictured) and Peter Capaldi are backing a £20million fundraising campaign to restore a fire-damaged part of the Glasgow School of Art. The pair have agreed to be trustees of the institution's appeal after the Mackintosh building was engulfed by flames last month.



Every little helps to fight the flab

TESCO is launching a diet service which will feature personalised eating plans and a new range of calorie-controlled meals for customers. The supermarket will unveil 'my fit lifestyle' zones in 50 shops across London and online. Products include a superfood salad, Moroccan chicken, wholemeal flatbread and a Mediterranean graze box. It is following a US trend for personalised eating plans.

and finally...

A THIEF dressed in a Homer Simpson onesie is wanted by police after a raid on a supermarket. He was one of four men who targeted the Sainsbury's store in Newhall, Derbyshire, in the early hours of Tuesday morning.

MERADISO Kids' Renforcé Reversible Bedlines Made from soft, pure cotton £8.99

Thursday Highlight

Ministers' fury over claim that poverty has doubled

THE proportion of families living below the poverty line has more than doubled over the past 30 years, according to a controversial taxpayer-funded report.

One in three homes now has a standard of living below the minimum level, it said, adding that millions have bad housing, no social lives, too little heating and too little food.

But it was dismissed as 'misleading' by the Government and con-

By **Steve Doughty**
Social Affairs Correspondent

trary to evidence that the number of people facing poverty has fallen substantially in the past 15 years. One of the surveys on which the report was based involved just 1,500 individuals.

It was produced by Poverty and Social Exclusion in the UK - a group headed by academics at Bristol University - and paid for through the government's Economic and Social Research Coun-

cil. Instead of using the official definition of poverty, the researchers used their own 'minimum standards of living', a level worked out from surveys in which people are asked which of a basket of goods and services are necessary.

'The percentage of households who fall below society's minimum standard of living has increased from 14 per cent to 33 per cent over the last 30 years, despite the size of the economy doubling,' said the researchers.

According to their report, 5.5million adults go without essential

clothing, while 2.5million children live in damp homes. Around 1.5million children live in households that cannot afford to heat their home.

One in four adults has an income below what the researchers consider is needed to avoid poverty, while one in every six adults in paid work is poor. More than one in five had been forced to borrow in the past year to pay for day-to-day needs.

More than one in five adults and children were poor at the end of 2012, the report said, because they had a low income and were 'multiply deprived' - suffering from three or more deprivations such as a lack of food, heating and clothing due to not having enough money.

It added that 'the majority of children who suffer from multiple deprivations live in small families with one or two siblings, live with both parents, have at least one parent

Statistics tell another story

THERE are a number of areas in which the report's claims are disputed. They include:

■ It ignored the official poverty line - those living on less than 60 per cent of average income - and substituted a measure worked out by asking people which of a basket of goods and services are necessary.

■ State surveys say there are 1.4 million fewer individuals and 11 million fewer children in relative poverty since 1998/99.

■ Official figures show incomes of the poorest fifth rising 19 per cent in real terms since 1995.

■ The most recent Whitehall housing survey found 970,000 damp homes - down from 2.6million in 1996.

'Misleading picture'

who is employed, are white and live in England.'

The report was based on a series of specially-commissioned surveys, one in 2012 involving fewer than 1,500 adults, and another in the same year that involved just over 5,000 homes. Professor David Gordon of Bristol University said: 'The coalition government aimed to eradicate poverty by tackling the causes of poverty. Their strategy has clearly failed.'

'The available high-quality scientific evidence shows that poverty and deprivation have increased since 2010, the poor are suffering from deeper poverty and the gap between the rich and poor is widening.'

The claims drew a scathing response from Whitehall. 'There is strong evidence that incomes have improved over the last 30 years, despite the misleading picture painted by this report,' said a source

close to Work and Pensions Secretary Iain Duncan Smith.

'The independent statistics are clear, there are 1.4 million fewer people in poverty since 1998, and under this Government we have successfully protected the poorest from falling behind, with a reduction of 300,000 children living in relative income poverty and 100,000 fewer children in workless poor families.'

'As part of our long-term economic plan, the Government is committed to tackling the root causes of child poverty.'

Last week Tory MPs accused Oxfam of supporting the Labour Party after it published a poster on poverty that read: 'The perfect storm... starring zero hours contracts, high prices, benefits cuts, unemployment, childcare costs.'

Weekly Offers

Thursday 19th to Wednesday 25th June

HAZELMEADE FARM
10 Back Bacon Rashers
Choose from Smoked or Unsmoked
400g
£4.98/kg, Chilled

Save 30%
~~£2.99~~

£1.99 per pack

Holy Grail of stamm

.....meanwhile on p29 of The Daily Mail, 19 June 2014

Mail-p29-20140619.pdf - Google Chrome

file:///C:/Users/jo/Downloads/Mail-p29-20140619.pdf

newspaper: 'I'd say no, if that's all she aspired to.' She went on: 'You know, I get a lot of girls who say, "I just want to be a model so badly". And I think, "You can do better".'

It is not the first time Miss Delevingne has given the impression she is tiring of life on the catwalk. She made her acting debut in Anna Karenina in 2012, and has also designed a range of accessories for Fendi.

Last year she was reportedly dropped by fashion chain H&M after images emerged of her dropping a bag of white powder outside her London flat.

Mulberry would not disclose how much Miss Delevingne's bags cost. But a comparable design sells for £1,100 at Selfridges.



I feel naked without a bag. Cara and her Mulberry satchel

side of the brain causes spatial awareness problems on the opposite side of the body.

The two participants in the study were taught how to play the chime bars. As the pair improved, the team at Goldsmiths, University of London, increased the distance between the bars to encourage them to play in the space on the affected sides of their bodies.

Following four sessions, the authors said that both participants showed significant improvement in clinical tests.

Researcher Dr Lauren Stewart said: 'It would be great to invite more patients to participate in future studies, as well as see if the music intervention has the capacity to translate to improvements in everyday tasks.'

This lonely nation

By **Steve Doughty**
Social Affairs Correspondent

BRITAIN is a fractured and lonely country compared to the rest of Europe, official indicators say.

We are less likely to have anyone to turn to in times of trouble than people almost anywhere else in the EU, they showed. We are equally unlikely to feel at home with our neighbours.

The uncertainties and isolation of life in Britain were thrown up by the Government's new happiness and wellbeing measures, introduced by David Cameron to try to find a way of checking the country's progress beyond traditional financial and population statistics.

The results, compared to similar findings from the same exercise carried out across the other 27 EU nations, show cracks in the wellbeing of the country behind the encouraging economic statistics showing recovery from recession and falling unemployment.

Britons, it found, are more satisfied with their family lives than people in most other countries. But when it comes to having someone to stand by them, things are different.

Only in Denmark and France were people less likely to say they could rely on someone to support them if they needed advice about a serious personal or family matter. More than 11 per cent of Britons had no one, against a seven per cent EU average, leaving us 26th on the continental table.

Britons were also less satisfied with their social lives than the average European and were frequently uncomfortable with their neighbours.

The European wellbeing report from the Office for National Statistics said: 'Looking at whether people feel close to each other in the area where they live can give a sense of whether they feel a belonging to their neighbourhood.'

It found that fewer than six out of ten in Britain say they feel close to their neighbours, a return that put

lives are, and anxiety. It also took into account existing European surveys and statistics.

There was no official analysis of why Britain does so poorly in key areas of wellbeing.

But there is widespread speculation that the support provided by extended families has been eroded by the rise of single parenthood and cohabiting relationships in which the partners have not chosen to make a legal commitment.

Rapid changes in neighbourhoods and the undermining of their long-standing relationships are often cited as effects of the large-scale immigration that has led to about four million people from abroad coming to live in Britain over the past 15 years.

The report said: 'The quality of social connections with people around us and a correct balance between working and social life may be beneficial to an individual's wellbeing.'

It found, however, that Britons rated their life satisfaction higher than the EU average.

s.doughty@daily Mail.co.uk

We have no one to turn to and don't get on with neighbours

1 in 5 can't cope financially

MORE than one in five people living in Britain can't make ends meet, ONS numbers suggest.

The study says that 20.2 per cent of the population find it difficult to cope financially.

But this compares with an EU average of 27.7 per cent - meaning Britons are much less likely to be poor than the rest of Europe.

The figure puts Britain on a par with France, which spends more of its national budget on social welfare - but below Nordic countries such as Sweden and Finland, where fewer than one in 10 can't meet their bills.

The country was just below the average ranking for 'social exclusion', which counts poverty measures, material deprivation and worklessness.

Among the wealthier EU countries, Belgium, Germany, France, Austria, Denmark, Sweden and the Netherlands all ranked worse than Britain by this measure.

We're Europe's unhealthiest

PEOPLE in the UK are more likely to say they are sick or disabled than almost every other EU country, says the ONS report.

This is despite the fact we live longer than the EU average.

Someone in Britain can expect to live to nearly 65 without a major health problem, compared to less than 62 years as the European average.

But nearly a third of the population said they had a long-standing illness or health problem, compared to an EU average of 31.5 per cent.

Some 62.7 per cent of people here said they thought their health was good, a level below every other western EU country except Portugal.

The study said: 'There is a two-way relationship between wellbeing and health: health influences wellbeing and wellbeing influences health.'

Mail-p26-20140619.pdf | Mail-p29-20140619 (1).pdf | Metro-p6-20140619.pdf | Metro-p6-20140619.pdf | Independent_j-p5-20140619.pdf | Independent_j-p5-20140619.pdf | Mirror-p6-20140619.pdf | Show all downloads...

...the ONS figures back the PSE findings derided on p26

ITV Tonight, March 28, 2013 – 3.4 million viewers

TONIGHT

BREADLINE BRITAIN

A special edition based on the PSE findings



#itvtonight

Edward Harkins @EdwardHarkins 43m
#itvtonight Scenes of 'workless' people keeping themselves busy 'doing work'. Scroungers? Where? #BreadlineBritain
Followed by Jim McCormick and 12 others
Expand

lisamarks @lisamarks 45m
The Breadline Britain report on #itvtonight is soul-destroying. The UK is broken. And then you read about banker's bonuses. It's so wrong.
Followed by stellacrazy
Expand

Gary Rae @gary_rae 46m
#breadlinebritain on #itvtonight Here's @jrf_uk look at this jrf.org.uk/topic/austerity #ukpoverty #ukausterity
Expand

Chris Park @parkovanbasten 46m
#itvtonight poverty and misery and social exclusion amongst the working classes. Yip, it's a Tory government alright.
Followed by Channel 4 News
Expand

Annie Rose Price @annieroseprice 48m
#itvtonight too many in this country living hand to mouth, what do eton educated politicians know about that?
Expand

[Profile] 43m
stigmatising of the kind of people we saw; not a jib at politicians
View conversation

Jacko @bigballs54 24m
#itvtonight
This is what the people should see the truth the hidden depravation. There not scroungers there how children
Expand

William @williamgray_ 26m
@mykkym1 @PSE2010 Thanks for the link to the real report good to read the truth not #itvtonight 's interpretation to gain viewing figures
View conversation

Statweestics @statweestics 26m
#itvtonight is getting popular, +700% the last hour : statweestics.com/793272/
Expand

Sir Muppet of Smegg @QUaNTRoN_X 27m
#itvtonight has done my head right in. nothing has changed. nothing. some folk got rich in a southern property bubble... that's it.

The programme gained a considerable support on social media

The website: impact objectives

- Increase public understanding
- Contribute to poverty debate
- Provide teaching materials
- Support community and other groups

The website - the challenge of a diverse audience

Specialist

Need to know

Delving deep

At home with stats

Non-specialist

Passing interest

Top level results

Frightened of numbers

The web – a busy world

Google

- Over 1 trillion unique urls
- 20 billion unique pages
- 1.5 billion images
- 100 trillion words

You Tube

- 72 hours of video are uploaded every minute
- Content ID scans over 100 years of video every day

The holding page, 2010

www.poverty.ac.uk



Poverty and Social Exclusion in the UK



What is **poverty**

What is poverty? How poor is too poor? What does a person need to participate in society in Britain in the twenty-first century? What is the minimum standard of living to which everyone should be entitled? Who falls below?

This website is being developed to report the findings of a major new ESRC research project into poverty and social exclusion in the UK. This important research project will provide new understandings of what it is like to live in poverty the UK today and how this interacts with social exclusion through a large scale survey to be carried out in 2011. It is a major collaboration between the University of Bristol, Heriot-Watt University, The Open University, Queen's University Belfast, University of Glasgow and the University of York working with the National Centre for Social Research and the Northern Ireland Statistics and Research Agency.

This website will be making accessible new data from the 2011 survey and data from the earlier surveys. We will enable you to interrogate this data and to track changes over time.

Are you interested in following this research and joining in? In the next few months, we'll be putting up more information and briefing papers.

We'd be interested in gathering people's views on necessities for living in the UK today and so we'll be putting up a survey which you can join in.

We launch **June 2010**. See you then

Register your interest

Your information will be used to make accessible new data from the 2011 survey and data from the earlier surveys. We will enable you to interrogate this data and to track changes over time.

Name

Email

Institution

Submit



The Open University, Queen's University Belfast, University of Glasgow and the University of York working with the National Centre for Social



Launched January 2011



The screenshot shows the homepage of the PSE UK website. At the top left is the PSE UK logo, which consists of a circular arrangement of stylized human figures in black and pink, followed by the text 'PSE UK'. To the right of the logo is the main title 'Poverty and Social Exclusion in the UK' in a bold, black font. Below the title is a subtitle: 'This website is to report the findings of a major new ESRC research project into poverty and social exclusion in the UK.' Below the subtitle is a horizontal navigation bar with seven buttons: 'Home', 'What is poverty?' (highlighted in pink), 'Research', 'Necessities Survey', 'Conference', 'News', and 'About us'. Below the navigation bar is a large banner area. On the left side of the banner, the text 'What is poverty?' is written in white on a dark grey background. On the right side of the banner, there is a photograph of an elderly woman with white hair and glasses, looking upwards with a thoughtful expression. Below the banner, there are two more instances of the text 'What is poverty?'. The first is on the left, and the second is on the right, inside a dark grey rounded rectangle with a pink underline.

PSE UK Poverty and Social Exclusion in the **UK**

This website is to report the findings of a major new ESRC research project into poverty and social exclusion in the UK.

Home **What is poverty?** Research Necessities Survey Conference News About us

What is poverty?

What is poverty? What is poverty?

Search by subject


Government policy
Poverty
 measurement
Benefits Child
poverty Government
 cuts Low pay Poverty
 forecast **Inequality Europe**
 Low-income households

[View all subjects](#)

Tweets

[Follow](#)

 **PSE2010Team** @PSE2010 14h
 Final spaces for free 2-day PSE Conference. Register here now! | Poverty and Social Exclusion poverty.ac.uk/take-part/even...
 Expand

 **PSE2010Team** @PSE2010 14h
 Wilshaw and Gove blame the feckless parents – as long as they're poor | Zoe Williams gu.com/p/3q7ct/tw
 Show Summary

Tweet to @PSE2010

Latest news

Benefits bill capped at £119 billion

Definitions of poverty

Definitions of poverty really matter. They set the standards by which we determine whether the incomes and living conditions of the poorest in society are acceptable or not and are essential for determining questions of fairness. From these definitions follow all actions to help the poorest.

In the UK these definitions are being hotly debated as the Coalition government seeks to change the criteria currently used to monitor and measure child poverty (see the PSE: UK team's response to these proposals in [Tackling Child Poverty and Improving Life Chances](#) and [Social Mobility and Child Poverty Review](#)). This section sets out different ways to define and measure poverty and outlines recent key developments. The PSE: UK research project uses the 'consensual method', which defines poverty as those whose lack of resources forces them to live below a publicly agreed minimum standard.

In the film below you can hear how key speakers at the [Second Peter Townsend Memorial Conference](#) defined poverty.



What is poverty?



www.poverty.ac.uk

Stage two

- Give people and communities a voice
- Personal stories
- Provide details of the research
- Be topical and relevant
- Authored pieces
- Make it searchable

Case studies



PSE

Poverty and Social Exclusion

Reporting research, examining policy, stimulating debate

Search

Home

Definitions of poverty

PSE research

Living in poverty

Communities

Take part

News and views

Personal experiences

Life stories

A young jobseeker

A single parent >

A disabled couple

A low-paid worker

A single pensioner

A single parent

Jennie is 39 and unemployed. She lives with her three sons, all of whom have disabilities, in Redbridge, outer London. The family has lived in temporary accommodation for the last 12 years.

Meet Jennie and family in the following three videos recorded in autumn 2011.

Search by subject

Government policy

Inequality Government cuts

Child poverty

Poverty

measurement

Poverty forecast Low pay Low-income households Europe

Benefits

View all subjects



Jennie 1 Living in uncertainty

Full details of PSE research



PSE

Poverty and Social Exclusion

Reporting research, examining policy, stimulating debate

Search

Home Definitions of poverty **PSE research** Living in poverty Communities Take part News and views

About PSE UK Key Findings Reports Working papers Questionnaires Explore the data Northern Ireland Past research International

Search by subject

Government policy

Inequality Government cuts

Child poverty

Poverty

measurement

Poverty forecast Low pay Low-

income households Europe

Benefits

[View all subjects](#)

PSE research

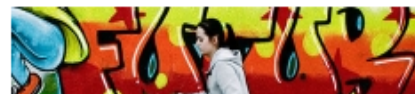
In this section you will find full details of the current Poverty and Social Exclusion in the United Kingdom research project (PSE UK), including background working papers as well as final reports, key summaries and an opportunity to investigate some of the key survey data. It also provides summary details of the predecessor research projects in Britain in 1999, 1990 and 1983 and in Northern Ireland in 2002/3.

These research projects all use relative deprivation to examine poverty and, in particular, the [consensual method](#). The key concept underlying the consensual approach is to identify what items are necessities on the basis of the public's perceptions of minimum needs and then to examine who is forced to go without these necessities. This research series therefore provides a unique insight into those who fall below the minimum standards set by society and how this has changed over time.

The first report from the PSE UK team '[The impoverishment of the UK](#)', was published in March 2013. It paints a shocking picture of the extent of deprivation and inadequate living standards in the UK today.

Many countries across the world, and in particular the European Union, have taken up and developed the idea of publicly-perceived necessities. Brief details of this research can be found under [International](#).

Featured PSE Research



Tweets

[Follow](#)



PSE2010Team

@PSE2010

13h

Final spaces for free 2-day PSE Conference. Register here now! | Poverty and Social Exclusion

Background reports and news

Poverty measurement

Poverty forecast Low pay Low-income households Europe

Benefits

[View all subjects](#)

Tweets [Follow](#)

PSE2010Team @PSE2010 13h
Final spaces for free 2-day PSE Conference. Register here now! | Poverty and Social Exclusion poverty.ac.uk/take-part/even...
Expand

PSE2010Team @PSE2010 13h
Wilshaw and Gove blame the feckless parents – as long as they're poor | Zoe Williams gu.com/p/3q7ct/w
[Show Summary](#)

Tweet to @PSE2010

Sign up for our **NEWSLETTER**

If you think we've missed an important report or you are interested in writing an article, do [contact us](#).

Featured news



'Troubled Families' in a spin

The Department of Communities and Local Government claims that the Troubled Families Programme is 'on track at the half-way stage'. Ruth Levitas unpicks the figures and argues this is far from the truth.



Impact of the recession on child...

Jonathan Bradshaw and Gill Main provide an update, 31 January 2014, on their analysis of available data on child poverty. This article discusses trends in child poverty in the UK and urges us all to 'watch this space'.



Would an independent Scotland set...

Would an independent Scotland choose a significantly different social settlement with a more generous social minimum than the rest of the UK? Drawing on the PSE UK findings into attitudes to necessities, Nick Bailey investigates.

All news and views

You can filter all the News stories, Reports and Articles in this section by subject in 'All news and views' below. When you've filtered by Subject, open stories you wish to view in a new tab to keep the subject term by which you've filtered.

Subject

- Any - [Apply](#)

Bedroom tax – just 6 per cent of tenants move

28/03/14

Only about 6 per cent of social housing tenants affected by the coalition government's 'bedroom tax' have moved home, according to...

Paying bills a struggle for 1 in 8 in Wales

27/03/14

As many as one in eight people in Wales are finding it a 'constant struggle' to keep up with their bills, according to the latest findings...

Child poverty commission – government responds

Searchable

Enter your keywords

troubled families

Search

Search results

'Troubled Families' in a spin

... in the both print and broadcast media, claiming that the **Troubled Families** Programme (TFP) was 'on track at the half-way stage'. It was ...

Mar 11 2014 - 15:49

Flaws in the government's troubled family strategy

... social justice hinges on the claim that there are 120,000 '**troubled**' **families** in Britain but this is deeply flawed, argues Professor Ruth Levitas in ...

Apr 10 2013 - 14:35 0 comments

Still not listening

... by Ruth Levitas On 18 July, Louise Casey, head of the **Troubled Families** Programme, published a report called Listening to **Troubled** ...

Oct 24 2012 - 16:37 0 comments

Troubled families programme 'on course'

... government's target for turning around the lives of '**troubled**' **families**, according to the latest progress report. The government has ... programme, local councils were working with more than 35,000 **troubled families** – up from 22,000 in December 2012. Councils had also ...

May 18 2013 - 15:33

Troubled families scheme 'making good progress'

Good progress is being made in implementing the '**troubled families**' programme, according to the coalition government. Figures gathered ...

Apr 10 2013 - 14:35 0 comments

'Troubled Families': parallels with the past

... would 'get to grips' with England's alleged 120,000 'most **troubled families**'. Yet the label is hardly new.

www.poverty.ac.uk

Final stage

- Making results accessible
- Making data interactive
- Providing detailed analysis papers
- And onwards...

Promoting key findings



PSE

Poverty and Social Exclusion

Reporting research, examining policy, stimulating debate

[Log in](#) or [register](#) to post comments

Search

[Home](#) [Definitions of poverty](#) [PSE research](#) [Living in poverty](#) [Communities](#) [Take part](#) [News and views](#)

[About us](#) [Contact us](#) [Free resources](#) [Newsletter archive](#)

Search by subject

[Government policy](#)

[Inequality](#) [Government cuts](#)

[Child poverty](#)

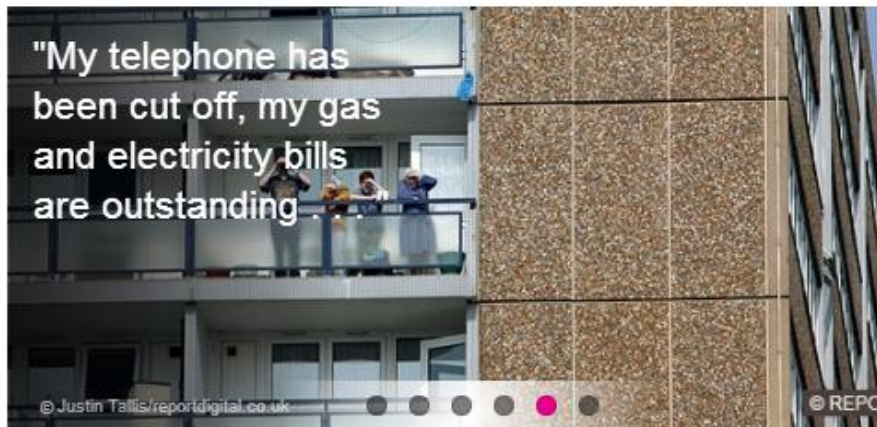
[Poverty](#)

[measurement](#)

[Poverty forecast](#) [Low pay](#) [Low-income households](#) [Europe](#)

[Benefits](#)

[View all subjects](#)



18%

of households have a constant struggle to keep up with their bills or have fallen behind.

[Download the annotated 2012 living standards questionnaire](#)



Tweets

[Follow](#)



PSE2010Team

@PSE2010

12h

Final spaces for free 2-day PSE Conference. Register here now! | Poverty and Social Exclusion [poverty.ac.uk/take-part/even...](#)

Hard times: 2014

The Hard Times reports provide evidence gathered by communities themselves on the impact of austerity and cuts on families and young people across Northern Ireland. Watch the accompanying films on home

3rd Peter Townsend Memorial...

Today 33% of the UK population suffer from multiple deprivation as defined by the UK public; in 1983 this figure was 14%. The 3rd Peter Townsend Memorial Conference: Poverty and Social Exclusion in the UK will be held in London, 19 - 20

Poverty in Scotland 2014: The...

The latest edition of Poverty in Scotland, 2014, sets out to inform the independence debate in Scotland, providing the latest facts and figures and looking at how other regions and nations have tackled the problem. Gerry Mooney gives an overview...

Making key findings accessible to general audience

Falling below minimum stan

Going backwards: 1983 - 2012

What do we think we need?

Northern Ireland: faring badly

Legacies of the Troubles

Search by subject

Government policy
Inequality Government cuts

Child poverty

Poverty
measurement

Poverty forecast Low pay Low-
income households Europe

Benefits

[View all subjects](#)

Falling below minimum standards

At a glance

PSE: UK 2012 is the most comprehensive survey of poverty and social exclusion ever undertaken in the UK. The research finds that about a third of households in the UK today face significant difficulties, specifically:

- Around 4 million people are not properly fed by today's standards.
- Around 2.5 million children live in homes that are damp.
- Around 2.3 million households cannot afford to heat the living areas of their homes.
- Over 30 million people suffer from financial insecurity.

The public sets the minimum living standard



The Poverty and Social Exclusion (PSE) research measures the numbers of people who fall below what the population as a whole think should be a minimum standard of living.

This is the only measure looking at both: what the majority think are necessities for life in the UK today, and actual living standards (rather than just income).

The PSE 2012 survey builds on similar surveys carried out in 1983, 1990 and 1999 in Britain and 2002/3 in Northern Ireland.

This first PSE Facts and Findings

Tweets

[Follow](#)



PSE2010Team
@PSE2010

14h

Final spaces for free 2-day PSE Conference. Register here now!

looks at the numbers lacking necessities in 2012. PSE [Facts and Findings](#)

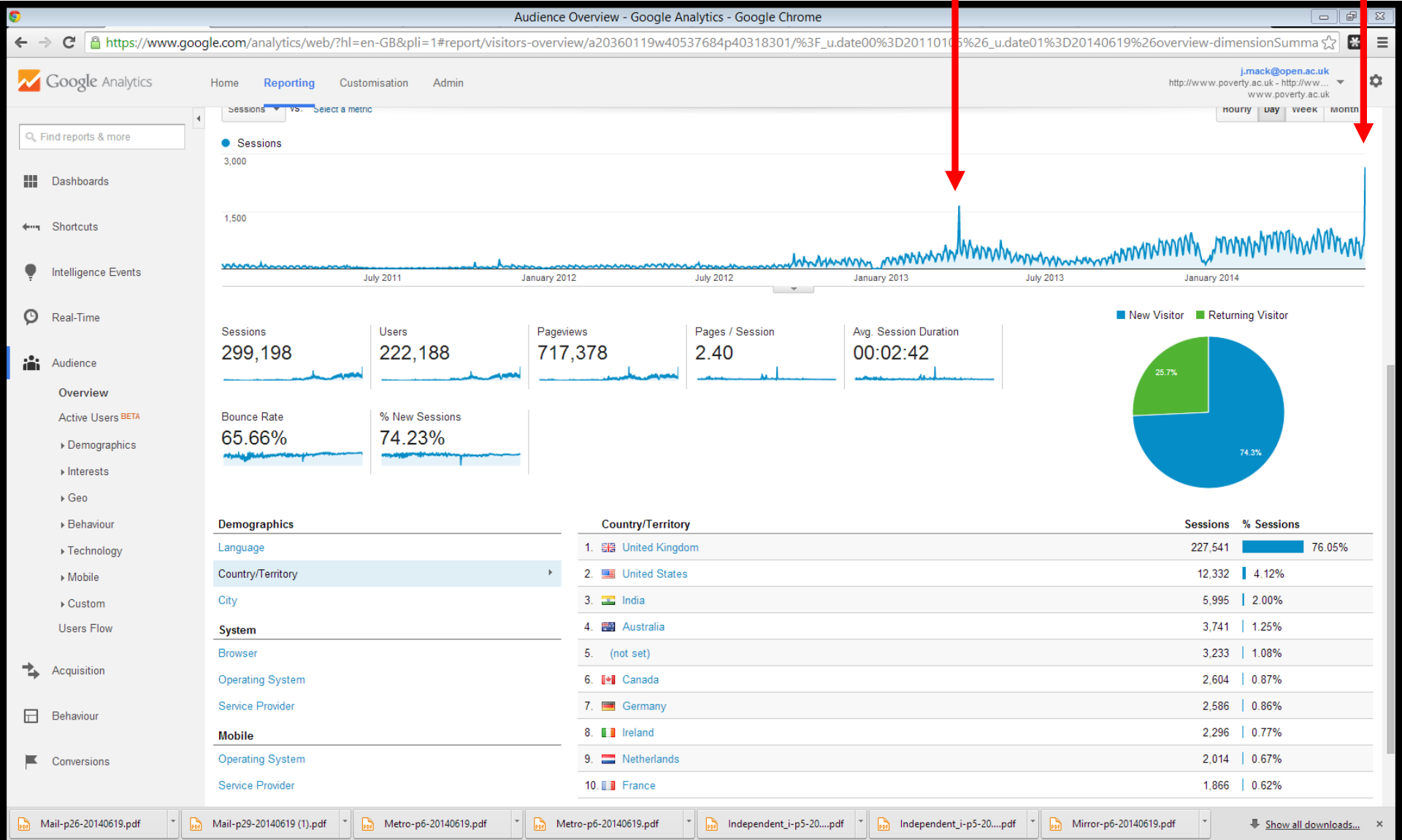
Making data interactive and visual

	1983	1990	1999	2012
Heating	97	97	95	96
Damp-free home	94	98	94	94
Warm coat	87	91	87	79
Three meals daily	82	91	90	93
Enough bedrooms	77	82	76	74
Celebrations	69	74	83	80
Washing machine	67	73	77	82
Two pairs shoes	67	74	67	54
Weekly family meal	67	64	58	36
Two meals daily	64	90	91	91
Hobby	64	67	79	70
Replace worn clothes	64	65	50	46
Meat or fish	63	77	81	76
Annual holiday	63	54	56	42
Presents annually	58	69	58	46
Television	51	58	58	51
Phone	43	56	72	77
Friends round fortnightly	37	52	53	49
Go out fortnightly	36	42	41	35
Family and friends visit	32	37	65	45
Car	22	26	36	44
Family visits			92	90
Repair electrics			86	86
Fruit and veg daily		88	87	83
Family occasions			81	78
Home decorated		88	80	69
Household insurance		92	83	69
Interview clothes			70	69
Some savings		68	67	52
Money for self			61	42

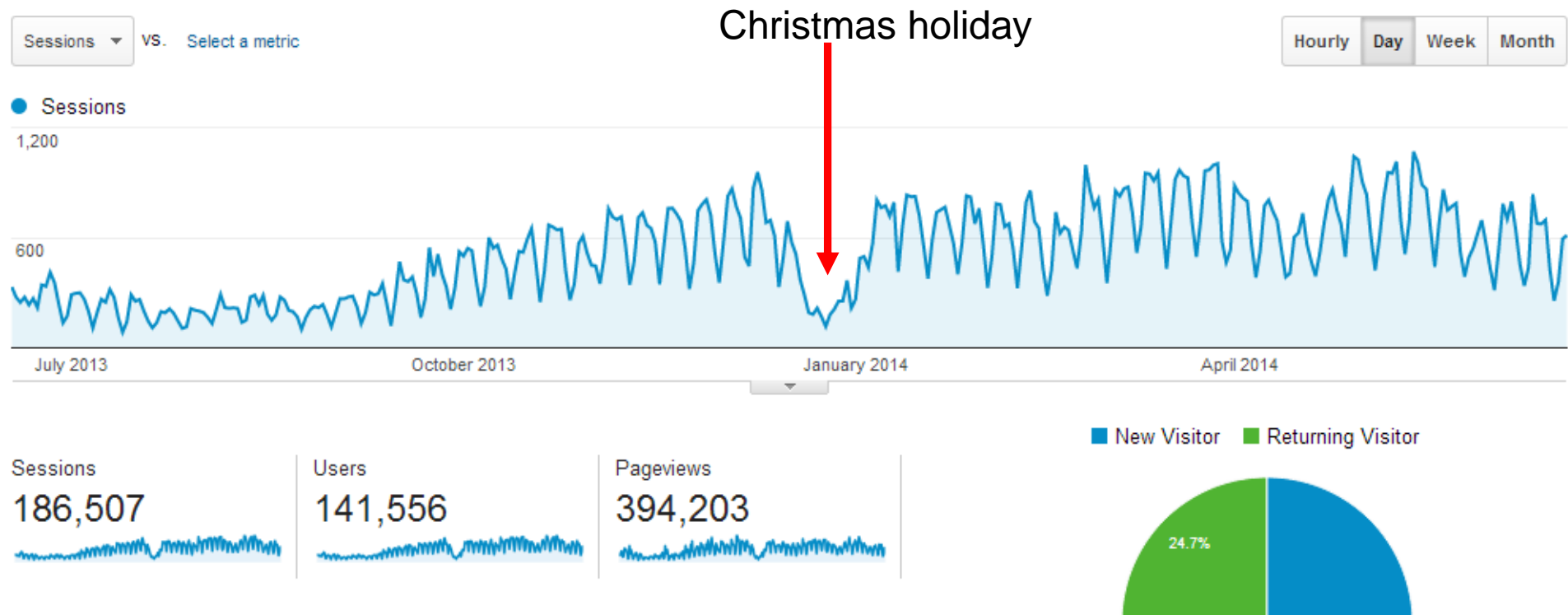
Building an audience

ITV Tonight tx

PSE conference



17 June 2013 – 17 June 2014



Visitors use the site during the week for work!



Find reports & more

- Dashboards
- Shortcuts
- Intelligence Events
- Real-Time

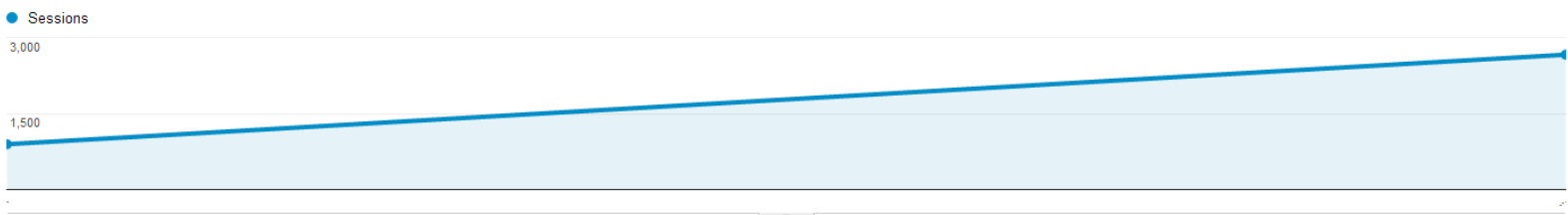
- Audience
 - Overview
 - Active Users BETA
 - Demographics
 - Interests
 - Geo
 - Behaviour
 - Technology
 - Mobile
 - Custom
 - Users Flow

- Acquisition
- Behaviour
- Conversions

Overview

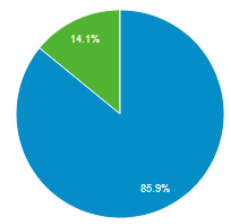
Sessions vs. Select a metric

Hourly Day Week Month



Sessions 3,553	Users 3,236	Pageviews 8,222	Pages / Session 2.31	Avg. Session Duration 00:02:32
Bounce Rate 58.29%	% New Sessions 85.87%			

New Visitor Returning Visitor



Demographics

- Language
- Country/Territory
- City
- System
 - Browser
 - Operating System
 - Service Provider
- Mobile
 - Operating System

Country/Territory

Country/Territory	Sessions	% Sessions
1. United Kingdom	1,908	53.70%
2. Germany	744	20.94%
3. Italy	112	3.15%
4. United States	105	2.96%
5. Netherlands	104	2.93%
6. France	46	1.29%
7. Switzerland	45	1.27%
8. Canada	39	1.10%
9. India	38	1.07%



Coming up

BOOKS

To be published by:

One World – an overview of last thirty years. To be published start 2015

Policy Press – detailed series of books on findings



Keep in touch

Twitter

@PSE2010

Subscribe to the newsletter

<http://www.poverty.ac.uk/contact-us>

